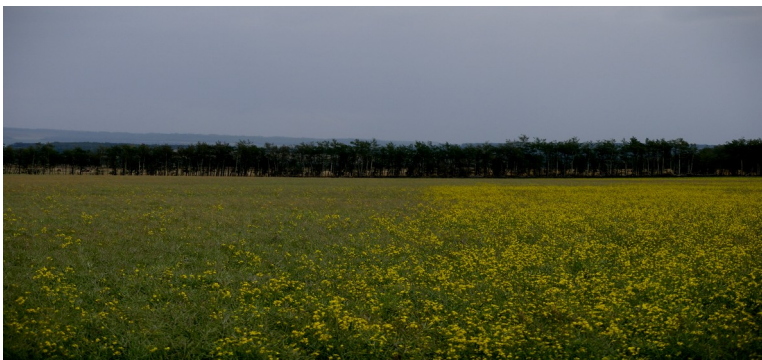




Boron is the spark plug of your canola pod. Like in a pick-up if the plug doesn't spark the piston doesn't fire, in the same way, if the boron doesn't fire a signal to the pod at the correct time you get a blank. If you are boron deficient your going to be shootin blanks. In that way it is essential in pollination and seed reproduction. It is also necessary for normal cell division, nitrogen metabolism, and protein formation. Boron plays a huge role in the proper function of cell membranes and transporting K to guard cells for the proper control of internal water balance. This makes it essential for proper cell wall formation. It is in charge of the translocation of sugars and carbohydrates in order to maintain a balance between sugar and starch.

Deficiency in canola will have distorted leaves and blank or partially filled seed heads because the pollen tube , which is controlled by boron, is not functioning properly. Wheat will have distorted heads and chlorosis of the leaves.

Some of the factors that affect Boron availability include High PH which reduces B availability and low PH which enhances it. Boron is mobile in solution in the soil, so coarse soils and high rainfall may cause temporary shortages. Adversely, because uptake is in part determined by water uptake, drought reduces B uptake. Also, B deficiency reduces root growth which aggravates the Boron stress. That is why we saw such a dramatic response in the trial this summer as displayed in the photo below where we applied a foliar application of boron.





# Check Up

Date	Description	Sign
June 29	Rolla Ag donated 1 jug of BoronMax to Rod Strasky. Custom Applied by Bigfoot Applicators	BF
Aug 6	Rod called RASL as Bigfoot was spraying for lygus bugs and noticed a huge difference in crop that was sprayed.	BF
Aug 31	Rod was swathing field and noticed that the boron stuff was done blooming and looked really good. The check had started blooming again due to 2-3 inches of rain mid to late august. Boron has a good stand, looks to be about 30 bu/ac. The check looks visibly poorer much thinner stand and way more leaf on the bottom looks like 15-20 bu/ac. boron grew taller thus bottom leaves swathed off.	BF
Sept 16	Talked to Rod we are still several weeks away although the trial was swathed Aug 31 it wasn't until sept 11 that he finished the field	BF
Oct 16	Rod combined Field. H 28 without boron - 33.5 bu/ac H 28 with boron - 43.8 bu/ac	

**Notes** \_\_\_\_\_

\_\_\_\_\_

\_\_\_\_\_

\_\_\_\_\_

\_\_\_\_\_

\_\_\_\_\_

\_\_\_\_\_